



Woodside Park Road, Woodside Park, N12 8XD  
Asking Price £600,000 Leasehold - Share of Freehold

Council Tax Band E

**REAL ESTATES**

Est. 1981

Estate Agents · Residential Sales · Investments · Lettings

Real Estates are pleased to present this well-maintained 3 BEDROOM, 2 BATHROOM (1 EN-SUITE) 1ST FLOOR FLAT situated in this highly sought-after purpose built block in Woodside Park.

The spacious 1,100 + SQ FT accommodation features a lounge/dining room with access to balcony, fitted kitchen, guest cloakroom, utility room, 3 bedrooms and 2 bathrooms including a modern en-suite. The property also has the benefit of a RESERVED PARKING BAY and a SHARE OF THE FREEHOLD.

Emerald Court is ideally located in the heart of Woodside Park, just a stone's throw from Woodside Park Northern Line Underground Station whilst being within easy reach of general amenities set on North Finchley High Road.

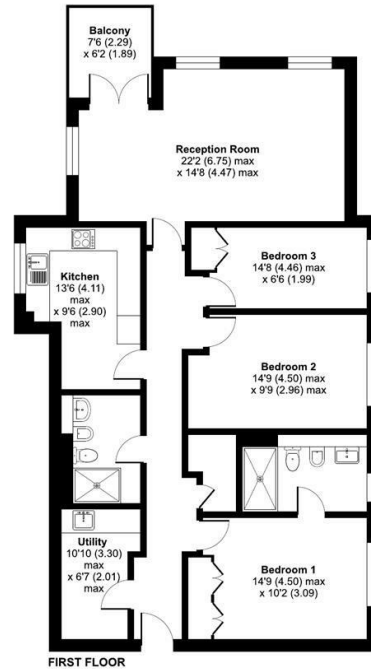
SOLE AGENT





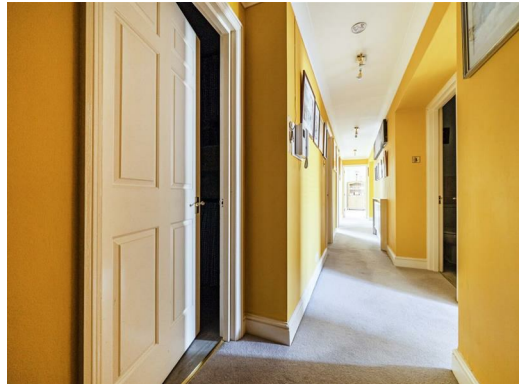
# Woodside Park Road, London, N12

Approximate Area = 1163 sq ft / 108 sq m  
For identification only - Not to scale



Floor plan produced in accordance with RICS Property Measurement 2nd Edition, incorporating International Property Measurement Standards (IPMS2 Residential). © nchocom 2026. Produced for Real Estates. REF: 1488285

Energy Efficiency Rating		Current	Potential
Very energy efficient - lower running costs			
A	92-100		
B	81-91		
C	69-80	77	82
D	55-68		
E	39-54		
F	21-38		
G	1-20		
Not energy efficient - higher running costs			
EU Directive			



Real Estates Woodside Park Office:  
14/14a Sussex Ring  
Woodside Park N12 7HX

ll : 020 8445 6387  
e : info@realestates-wsp.co.uk  
w : www.realestates-wsp.co.uk